

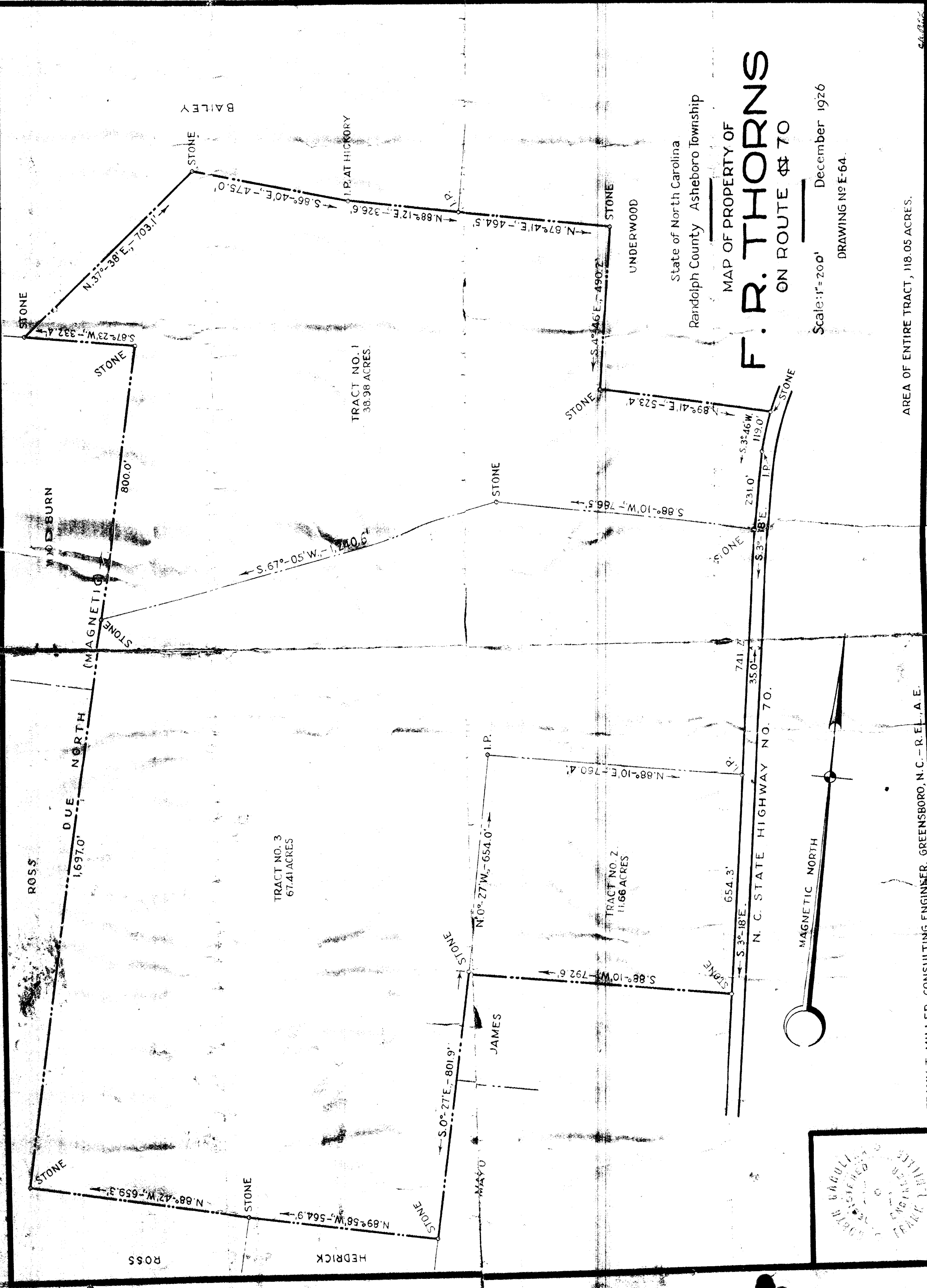
F. R. THORNS

ON ROUTE 70

State of North Carolina
 Randolph County Asheboro Township

Scale: 1" = 200'
 December 1926
 DRAWING NO. E-64.

AREA OF ENTIRE TRACT, 118.05 ACRES.



FRANK T. MILLER, CONSULTING ENGINEER, GREENSBORO, N.C. - R.E.L.A.E.